

The Ludington

The Townhomes



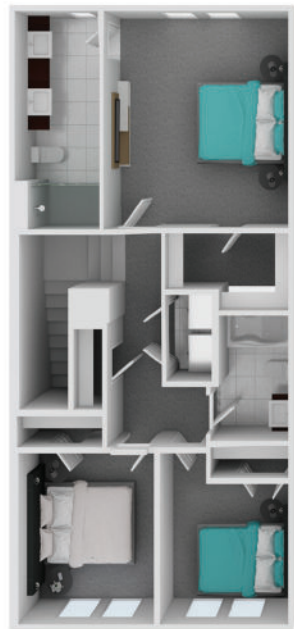
3 Bedrooms



2.5 Bathrooms



1,600 Sq. Ft.



SECOND FLOORPLAN



FIRST FLOORPLAN



SCAN ME



EVANSFARMMARKETPLACE.COM

2105 ROOSEVELT DRIVE, LEWIS CENTER, OHIO 43035

740-871-7777



EQUAL HOUSING OPPORTUNITY



Evans Farm Marketplace proudly introduces to you the next phase in New Urbanism Living. New Urbanism is characterized by a planning and development approach based on the principles of how cities and towns had been built for the last several centuries: walkable blocks and streets, housing and shopping in close proximity, and accessible public spaces. In other words: New Urbanism focuses on human-scaled urban design.

Over the next several months you will begin to see the initial stages of apartment living intermingled with vibrant commercial businesses develop in the Evans Farm Marketplace section of Evans Farm.

Evans Farm apartment living will feature a combination of distinctively designed large one, two and three-bedroom apartments. The design will focus initially around three concepts:

- The Townhomes:** A two story 3-bedroom 2 ½ bath townhome style apartment with a large private patio and 2 car garage
- The Flats (coming Winter 2021-2022):** 1, 2 & 3 bedroom garden style apartments located above restaurants, various retailers and more
- The Cove (coming Summer 2022):** A 1, 2 & 3 bedroom ranch style apartment.

The Townhome Features

- 1,600 SqFt Apartments
- Private Covered Entrance
- 20' x 20' Enclosed Patio
- 2 Car Garage
- 10' Ceilings
- Three Bedrooms
- Two and ½ Baths
- Smart Thermostat and Entry Locks
- Stainless Steel Appliances
- Large 25cuft Side by Side Refrigerator
- Washer & Dryer is Included
- Vinyl Plank Flooring throughout with Plush Carpeting in the bedrooms
- Large Island with Granite Counter
- Large Master Bedroom with Double Sinks, Shower and Walk-in Closet
- Personalized, Secure and Managed 1Ghz High Speed Wi-Fi Internet



EVANSFARMMARKETPLACE.COM

2105 ROOSEVELT DRIVE, LEWIS CENTER, OHIO 43035

740-871-7777

